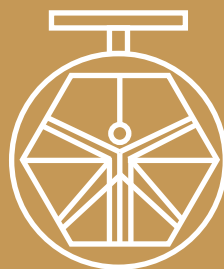


**GROUP 400
CHECK
VALVES MOD.
410C/26**



**DAVINCI
VALVES™**

**TECHNICAL
DATA SHEET**

WATER Series

**SWING CHECK VALVES
FLANGED ENDS**

**DAVINCI
VALVES™**



**QUALITY
ASSUREMENT**

**DAVINCI
VALVES™**



**PRODUCT QT
ASSUREMENT**

**DAVINCI
VALVES™**



**COMPANY QT
ASSUREMENT**

www.davincivalves.com

18 Dongyu Street, Square One,
11th Floor 1101, Jinjiang District,
Chengdu, Sichuan CHINA

10F/Tower A, Billion Center,
1 Wang Kwong Road, Kowloon Bay
Kowloon HONG KONG

SWING CHECK VALVE FLANGED END

Ref.410C / PN 10-16

APPLICATION:

Water and sewage hydraulic installations, heating.

GENERAL CHARACTERISTICS:

Epoxy paint 250 Mic

Working temperature -10°C to 120°C

Full Bore

Optional Lever&Weight and hydraulic dumper

Brass seat, others materials be able (Bronze,

STANDARDS:

Manufacture according to ISO 9001 2008.

Face to Face : EN 558-1 Series 48.

Mounting with flanges : PN10 / PN16 EN 1092-2.

Pressure Test: EN 12266-1 Rate A.

Body : 24 bar. Asiento / Seat : 17,6 bar.pressure:

Cat. III mod. H.



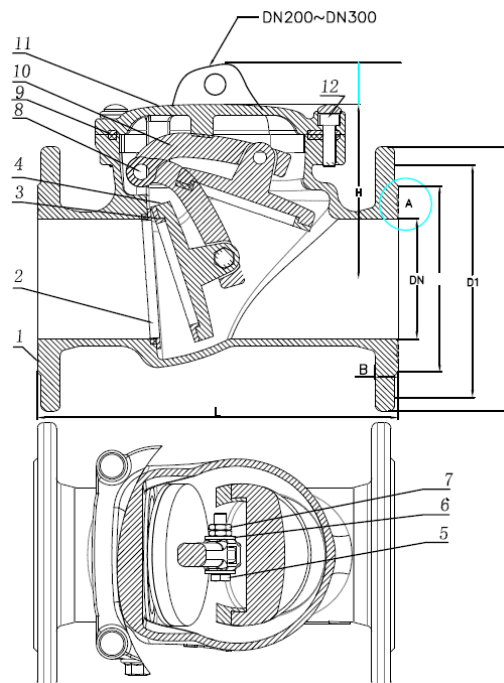
WORKING CONDITIONS:

Maximum Working Pressure : 16 bar.

Metal Seat Working Temperature : - 10 °C / + 120 °C .

Maximum Fluid Speed : 3,2 M/s.

Nº	PART NAME	MATERIAL
1	Body	GJS500
2	Valve seat	Brass Hpb59-1
3	Seal ring	Brass Hpb59-1
4	Disc	GJS500
5	Bolts	SS201
6	Gasket	SS304
7	Nut	SS201
8	Pin	2CR13
9	Seal gasket	NBR
10	Rocker arm	GJS500
11	Bonnet	GJS500
12	Bolts	Q235



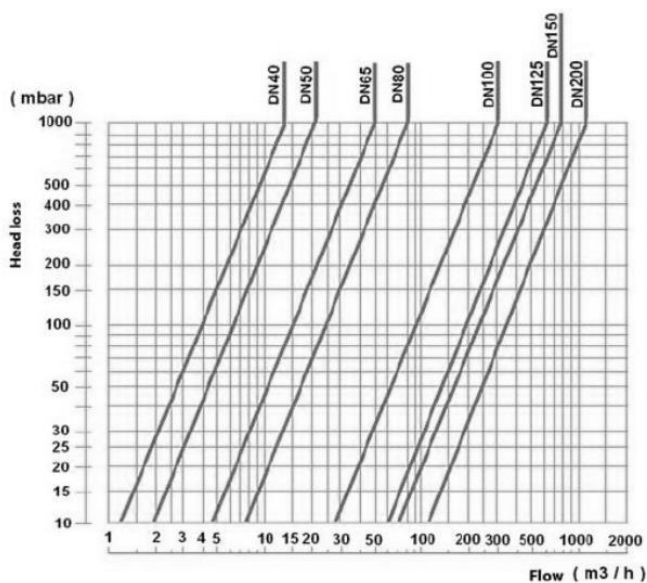
All the components can be substituted with equivalent or higher-class materials.

DAVINCI VALVES LTD, is constantly looking at all ways of improving our products and services related to the water, fire and industry sector and therefore we reserve the right to change, without prior notice, any of the data contained here. Please contact our Technical Sales Department for detailed advice.
© 2018 DAVINCI VALVES LTD.

SWING CHECK VALVE FLANGED END

Ref.410C / PN 10-16

DN	L	D Ø	D1 Ø	D2 Ø	b	f	Z-d (pn16)	H
40	180	150	110	84	18	3	4-Ø19	115
50	200	165	125	99	20	3	4-Ø19	115
65	240	185	145	118	20	3	4-Ø19	118
80	260	200	160	132	22	3	8-Ø19	130
100	300	220	180	156	24	3	8-Ø19	145
125	350	250	210	184	26	3	8-Ø19	160
150	400	285	240	211	26	3	8-Ø23	185
200	500	340	295	266	30	3	12-Ø23	285
250	600	405	355	319	32	3	12-Ø28	325
300	700	460	410	370	32	4	12-Ø28	390



All the components can be substituted with equivalent or higher-class materials.

DAVINCI VALVES LTD, is constantly looking at all ways of improving our products and services related to the water, fire and industry sector and therefore we reserve the right to change, without prior notice, any of the data contained here. Please contact our Technical Sales Department for detailed advice.
© 2018 DAVINCI VALVES LTD.

www.davincivalves.com info@davincivalves.com +34 616553797 / +86 17340168233
18 Dongyu Street, Square One 11th Floor 1101. Jinjiang District, Chengdu, Sichuan Province, China

"For professionals who wants more"



DAVINCI
VALVES™