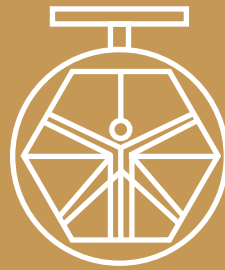


**GROUP 300  
COMPLEMENTS  
MOD. 300A/63**



**DAVINCI  
VALVES™**

**TECHNICAL  
DATA SHEET**

**WATER Series**

**RUBBER EXPANSION JOINTS  
SINGLE SPHERE FLANGED ENDS**

**DAVINCI  
VALVES™**



**QUALITY  
ASSUREMENT**

**DAVINCI  
VALVES™**



**PRODUCT QT  
ASSUREMENT**

**DAVINCI  
VALVES™**



**COMPANY QT  
ASSUREMENT**

[www.davincivalves.com](http://www.davincivalves.com)

18 Dongyu Street, Square One,  
11th Floor 1101, Jinjiang District,  
Chengdu, Sichuan CHINA

10F/Tower A, Billion Center,  
1 Wang Kwong Road, Kowloon Bay  
Kowloon HONG KONG

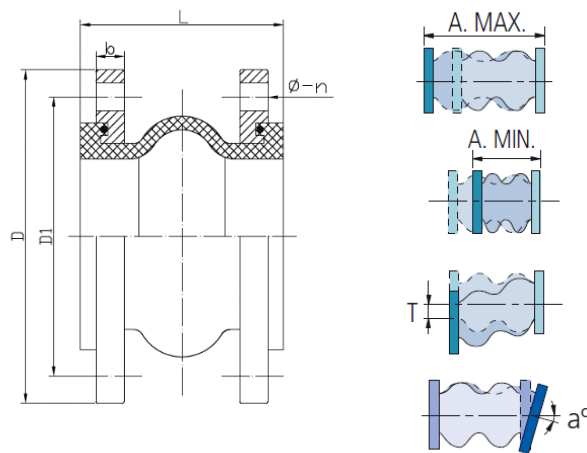
## RUBBER EXPANSION JOINTS SINGLE SPHERE FLANGED END Ref.300A / PN 10-16

### APPLICATION:

Heating, air conditioning, cooling  
overheated water, water systems, pump  
stations, connection of compressors,  
industrial & ship installations.

### GENERAL CHARACTERISTICS:

Range from ND32 up to ND600.  
Designed to absorb dilatation movements,  
vibrations in fluid conduction pipelines.  
Single wave construction with low load loss.  
Absorbs sound and isolates vibrations from  
any direction.  
Not need assembly joints.



### SINGLE WAVE DIMENSIONS

DN	L	Weight	PN 10				PN 16				DISPLACEMENT			
			D	D1	b	$\phi-n$	D	D1	b	$\phi-n$	Extens.	Compr.	Transv.	Angle
32	95	2.6	140	100	14	18-4	140	100	14	18-4	6	9	9	15°
40	95	3.1	150	110	14	18-4	150	110	14	18-4	6	10	9	15°
50	105	4.2	165	125	15	18-4	165	125	15	18-4	7	10	10	15°
65	115	5.2	185	145	15	18-4	185	145	15	18-4	7	13	11	15°
80	130	6.2	200	160	17	18-8	200	160	17	18-8	8	15	12	15°
100	135	7.5	220	180	17	18-8	220	180	17	18-8	10	19	13	15°
125	170	10.3	250	210	19	18-8	250	210	19	18-8	12	19	13	15°
150	180	12.8	285	240	19	22-8	285	240	19	22-8	12	20	14	15°
200	205	18.6	340	295	21	22-8	340	295	21	22-12	16	25	22	15°
250	240	27.2	395	350	23	22-12	405	355	23	26-12	16	25	22	15°
300	226	34.5	445	400	22	22-12	460	410	24	26-12	16	25	22	15°
350	255	45.6	505	460	22	22-16	520	470	26	26-16	16	25	22	15°
400	255	58.4	565	515	22	26-16	580	525	28	30-16	16	25	22	15°
450	255	68.0	615	565	22	26-20	640	585	28	30-20	16	25	22	15°
500	255	90.2	670	620	24	26-20	715	650	30	33-20	16	25	22	15°
600	260	122.5	780	725	23	30-20	840	770	31	36-20	16	25	22	15°

All the components can be substituted with equivalent or higher-class materials.

DAVINCI VALVES LTD, is constantly looking at all ways of improving our products and services related to the water, fire and industry sector and therefore we reserve the right to change, without prior notice, any of the data contained here. Please contact our Technical Sales Department for detailed advice.

© 2018 DAVINCI VALVES LTD.

www.davincivalves.com info@davincivalves.com +34 616553797 / +86 17340168233  
18 Dongyu Street, Square One 11th Floor 1101. Jinjiang District, Chengdu, Sichuan Province, China

## RUBBER EXPANSION JOINTS SINGLE SPHERE FLANGED END Ref.300A / PN 10-16

### STANDARDS:

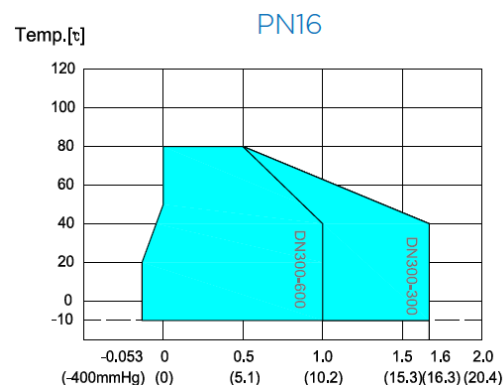
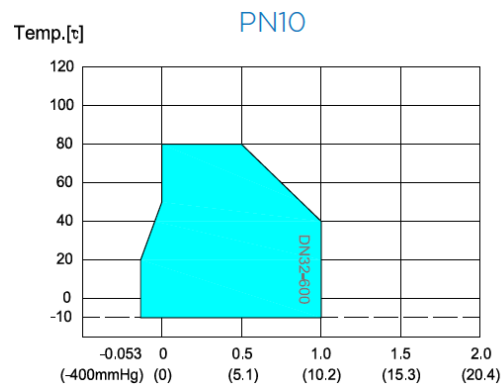
Mounting with flanges: EN 1092-1 PN10 / PN16/ANSI150#  
Side flanges according to: ISO 7005-1.  
Pressure Test: EN 12266-1, class A.  
Body: 24 bars.

*Products excluded from directive 2014/68/EU  
Equipment under pressure (Article 4 & 3).*

### WORKING CONDITIONS:

Maximum Working Pressure: 16 bar (\*)  
Explosion Pressure: 50 bar.  
Working Temperature: - 10 °C - + 100 °C.  
See correction chart according to temperature.  
Vacuum KPa(mmHg) 65(490) .

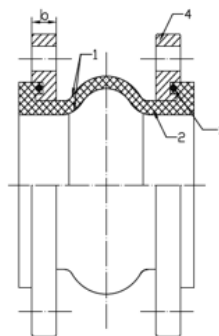
### WORKING PRESSURE/ TEMPERATURE TABLE



NO.	PART	MATERIAL
1	BODY	EPDM/NBR
2	KEY FRAME	CORD FABRIC
3	PRESSURIZED RING	STEEL WIRE STRAND
4	FLANGED	STEEL Q235

### ELASTOMER

MATERIALS CODE	BODY	HIGHEST TEMPERATURE
BB	Butile	90°
EE	E.P.D.M.	105°
NY	Hypalon	100°
NN	Neoprene	90°
NBR	NBR	90°



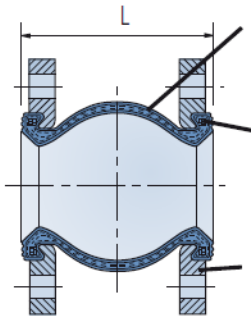
*All the components can be substituted with equivalent or higher-class materials.*

DAVINCI VALVES LTD, is constantly looking at all ways of improving our products and services related to the water, fire and industry sector and therefore we reserve the right to change, without prior notice, any of the data contained here. Please contact our Technical Sales Department for detailed advice.

© 2018 DAVINCI VALVES LTD.

www.davincivalves.com info@davincivalves.com +34 616553797 / +86 17340168233  
18 Dongyu Street, Square One 11th Floor 1101. Jinjiang District, Chengdu, Sichuan Province, China

## RUBBER EXPANSION JOINTS SINGLE SPHERE FLANGED END Ref.300A / PN 10-16

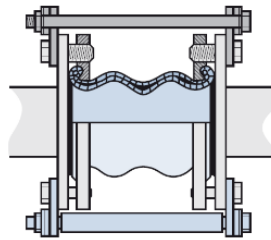


Body of synthetic rubber and reinforcing fiber.

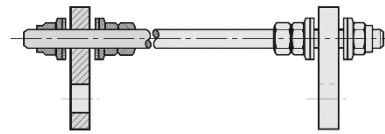
Reinforcing ring make of steel for spring.

Cast C. Steel plated flanges.

### ASSEMBLY POSITION

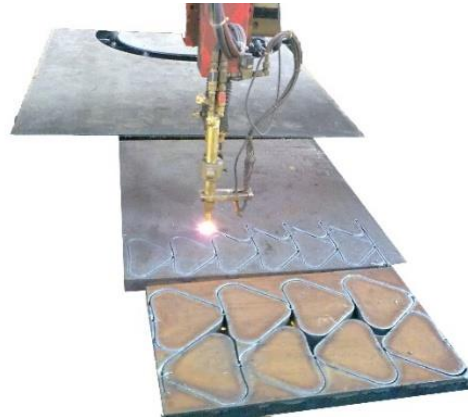


TIE RODS INCLUDE NUTS AND WASHES.



### NEED FOR CONTROL TIE RODS BASED ON WORKING PRESSURE

ND	BAR	ND	BAR
40	15	250	7
50	15	300	7
65	15	350	7
80	15	400	5
100	10	450	5
125	10	500	5
150	10	600	5
200	7		



All the components can be substituted with equivalent or higher-class materials.

DAVINCI VALVES LTD, is constantly looking at all ways of improving our products and services related to the water, fire and industry sector and therefore we reserve the right to change, without prior notice, any of the data contained here. Please contact our Technical Sales Department for detailed advice.  
© 2018 DAVINCI VALVES LTD.  
www.davincivalves.com info@davincivalves.com +34 616553797 / +86 17340168233  
18 Dongyu Street, Square One 11th Floor 1101. Jinjiang District, Chengdu, Sichuan Province, China

*"For professionals who wants more"*



DAVINCI  
VALVES™