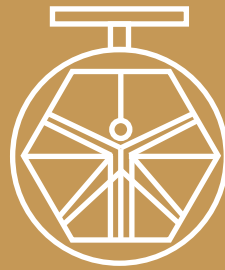


**GROUP 300
COMPLEMENTS
MOD. 301A/63**



**DAVINCI
VALVES™**

**TECHNICAL
DATA SHEET**
WATER Series

**RUBBER EXPANSION JOINTS HIGH
PRESSURE SINGLE SPHERE FLANGED ENDS**

**DAVINCI
VALVES™**



**QUALITY
ASSUREMENT**

**DAVINCI
VALVES™**



**PRODUCT QT
ASSUREMENT**

**DAVINCI
VALVES™**



**COMPANY QT
ASSUREMENT**

www.davincivalves.com

18 Dongyu Street, Square One,
11th Floor 1101, Jinjiang District,
Chengdu, Sichuan CHINA

10F/Tower A, Billion Center,
1 Wang Kwong Road, Kowloon Bay
Kowloon HONG KONG

RUBBER EXPANSION JOINTS SINGLE SPHERE FLANGED END Ref.300A / PN 10-16-25-40

WORKING CONDITIONS:

Maximum Working Pressure: 40 bar (*)
 Explosion Pressure: 80 bar.
 Working Temperature: - 10 °C - + 80 °C.
 See correction chart according to temperature.
 Vacuum KPa(mmHg) 65(490) .

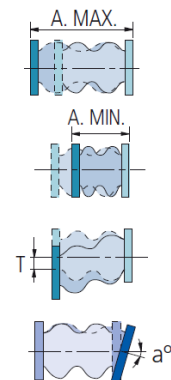
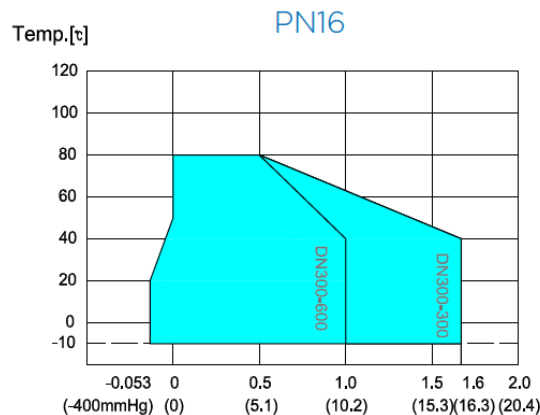
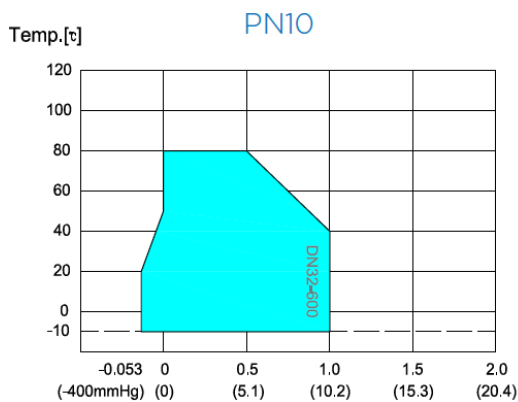


ELASTOMER

PART	MATERIAL
BODY	EPDM/NBR
KEY FRAME	CORD FABRIC
PRESSURIZED RING	STEEL WIRE STRAND
FLANGED	STEEL Q235

MATERIALS CODE	BODY	HIGHEST TEMPERATURE
BB	Butile	90°
EE	E.P.D.M.	105°
NY	Hypalon	100°
NN	Neoprene	90°
NBR	NBR	90°

WORKING PRESSURE/ TEMPERATURE TABLE



All the components can be substituted with equivalent or higher-class materials.

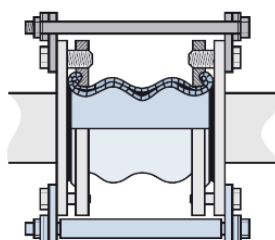
DAVINCI VALVES LTD, is constantly looking at all ways of improving our products and services related to the water, fire and industry sector and therefore we reserve the right to change, without prior notice, any of the data contained here. Please contact our Technical Sales Department for detailed advice.

© 2018 DAVINCI VALVES LTD.
 www.davincivalves.com info@davincivalves.com +34 616553797 / +86 17340168233
 18 Dongyu Street, Square One 11th Floor 1101. Jinjiang District, Chengdu, Sichuan Province, China

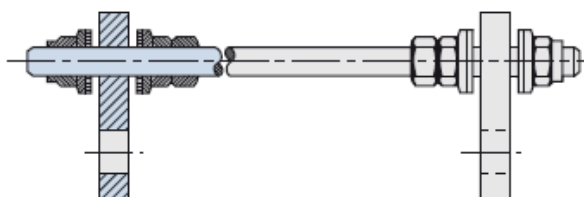
RUBBER EXPANSION JOINTS SINGLE SPHERE FLANGED END

Ref.300A / PN 10-16-25-40

ASSEMBLY POSITION

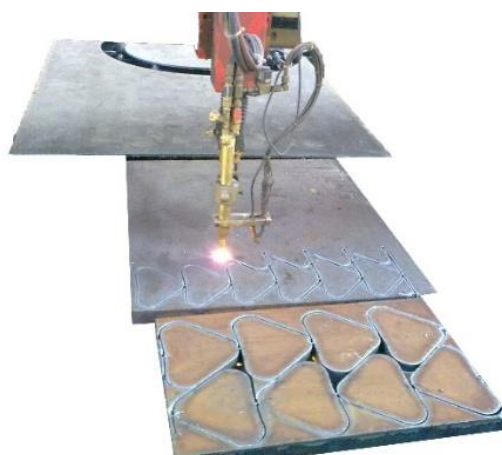


TIE RODS INCLUDE NUTS AND WASHES.



NEED FOR CONTROL TIE RODS BASED ON WORKING PRESSURE

ND	BAR	ND	BAR
40	15	250	7
50	15	300	7
65	15	350	7
80	15	400	5
100	10	450	5
125	10	500	5
150	10	600	5
200	7		



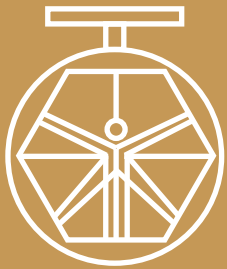
All the components can be substituted with equivalent or higher-class materials.

DAVINCI VALVES LTD, is constantly looking at all ways of improving our products and services related to the water, fire and industry sector and therefore we reserve the right to change, without prior notice, any of the data contained here. Please contact our Technical Sales Department for detailed advice.

© 2018 DAVINCI VALVES LTD.

www.davincivalves.com info@davincivalves.com +34 616553797 / +86 17340168233
18 Dongyu Street, Square One 11th Floor 1101. Jinjiang District, Chengdu, Sichuan Province, China

"For professionals who wants more"



DAVINCI
VALVES™