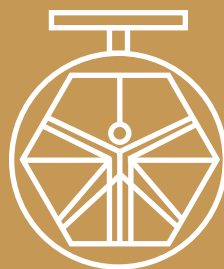


**GROUP 100  
BALL VALVES  
MOD. 743A/44**



**DAVINCI  
VALVES™**

**TECHNICAL  
DATA SHEET**

**INDUSTRY Series**

**2-PC BALL VALVE DIN F4/F5 WITH DIRECT  
MOUNTING PAD FLAN GED END PN16-40 WITH  
FIRE SAFE DEVICE**

**DAVINCI  
VALVES™**



**QUALITY  
ASSUREMENT**

**DAVINCI  
VALVES™**



**PRODUCT QT  
ASSUREMENT**

**DAVINCI  
VALVES™**



**COMPANY QT  
ASSUREMENT**

[www.davincivalves.com](http://www.davincivalves.com)

18 Dongyu Street, Square One,  
11th Floor 1101, Jinjiang District,  
Chengdu, Sichuan CHINA

10F/Tower A, Billion Center,  
1 Wang Kwong Road, Kowloon Bay  
Kowloon HONG KONG

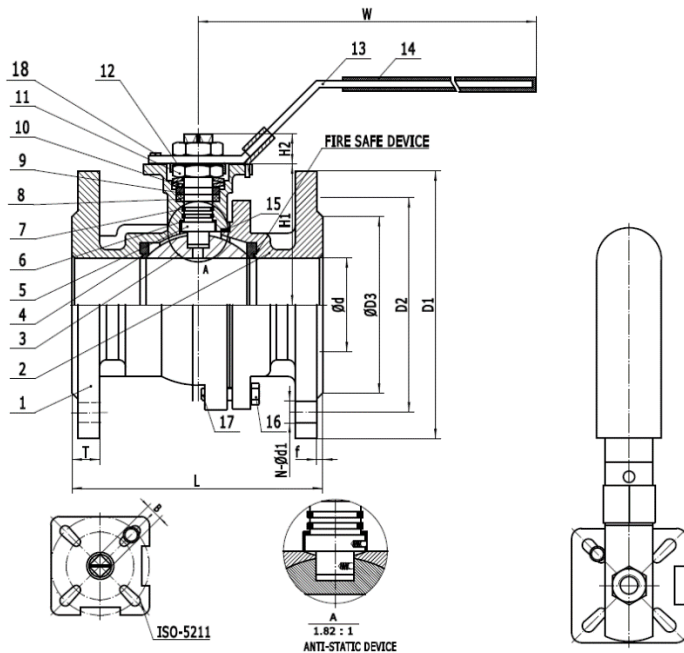
## 2-PC BALL VALVE DIN F4/F5 WITH DIRECT MOUNTING PAD FLANGED END PN16-40 WITH FIRE SAFE DEVICE Ref. 743B.44

### GENERAL CHARACTERISTICS:

Range from 1/2" up to 12" Full bore  
 Design DIN3357 EN12516 F4 / F5 Flanges DIN2501 PN16-40  
 Direct mounting ISO Flange ISO5211. Blow-out proof Stem  
 Fire Safe Device ISO10497 & Anti-Static ISO 17292  
 Manufacture acc. to the requirements of the EU directive 2014/68/EU Equipment  
 under pressure: Cat. III mod. H Inspection Testing API598 EN12266

### WORKING CONDITIONS:

Maximum Working Pressure:  $\leq$ DN50--PN40.>DN50 PN16  
 Max.Working Temperature: -20 °C / +190 °C  
 Suitable Media: Water, Oil, Gas, others.  
 Consult Factory for other applications



ITEM	PART	MATERIAL
1	Body	CF8M/CF8
2	Cap	CF8M/CF8
3	Ball	CF8M/CF8
4	Ball seat	RPTFE+15 Glass
5	Stem	304/316
6	Thrust washer	RPTFE+15 Glass
7	O-Ring	VITON
8	V-ring packing	GRAPHITE
9	Packing follower	SS304
10	Washer	SS301
11	Stem nut	SS301
12	Stop Washer	SS304
13	Handle	SS304
14	Plastic cover	PLASTIC
15	Body Gasket	GRAPHITE
16	Nut	SS304
17	Bolt	SS304
18	Stop pin	SS304

ND	d±0.5	b	W±3	L±2	D3	D1	T	F	H1	H2
1/2"	15	9	140	115	45	95	16	2	48,5	9
3/4"	20	9	140	120	58	105	18	2	53,5	9
1"	25	11	162	125	68	115	18	2	59,5	11
1.1/4"	32	11	162	130	78	140	18	2	71	11
1.1/2"	38	14	187	140	88	150	20	3	78	14
2"	50	14	187	150	102	165	20	3	85	14
2.1/2"	64	17	302	170	122	185	18	3	107	17
3"	76	17	302	180	135	200	20	3	117	17
4"	94	22	322	190	158	220	20	3	136	22
5"	125	22	b-b	325	188	250	22	3	183	27
6"	150	22	b-b	350	212	285	22	3	202	27
8"	200	24	b-b	400	268	340	24	3	250	27

All the components can be substituted with equivalent or higher-class materials.

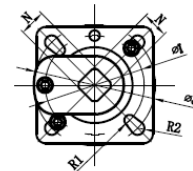
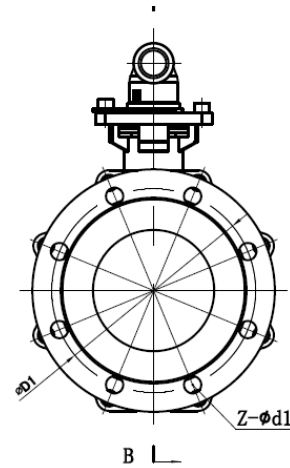
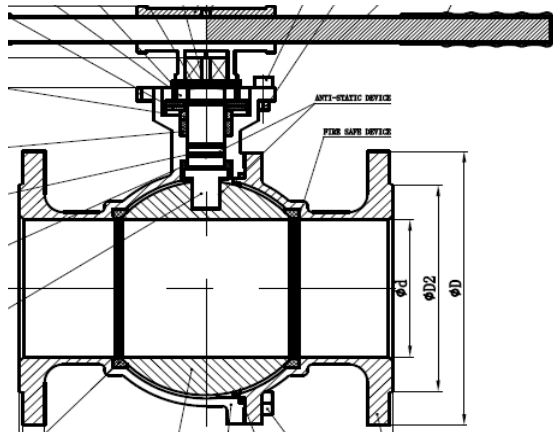
DAVINCI VALVES LTD, is constantly looking at all ways of improving our products and services related to the water, fire and industry sector and therefore we reserve the right to change, without prior notice, any of the data contained here. Please contact our Technical Sales Department for detailed advice.  
 © 2018 DAVINCI VALVES LTD.

[www.davincivalves.com](http://www.davincivalves.com) [info@davincivalves.com](mailto:info@davincivalves.com) +34 616553797 / +86 17340168233

## 2-PC BALL VALVE DIN F4/F5 WITH DIRECT MOUNTING PAD FLANGED END PN16-40 WITH FIRE SAFE DEVICE

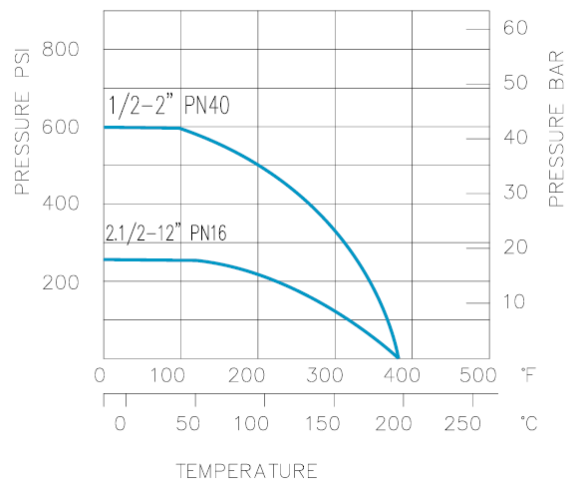
Ref. 743B.44

DN125-200



ND	TORQUE (Nm)
15	7
20	9
25	14
32	18
40	23
50	33
65	36
80	55
100	90
125	170
150	270
200	380
250	500
300	650

PRESSURE/TEMPERATURE RATING



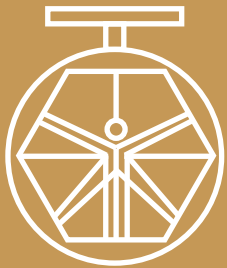
All the components can be substituted with equivalent or higher-class materials.

DAVINCI VALVES LTD, is constantly looking at all ways of improving our products and services related to the water, fire and industry sector and therefore we reserve the right to change, without prior notice, any of the data contained here. Please contact our Technical Sales Department for detailed advice.

© 2018 DAVINCI VALVES LTD.

[www.davincivalves.com](http://www.davincivalves.com) [info@davincivalves.com](mailto:info@davincivalves.com) +34 616553797 / +86 17340168233

*"For professionals who wants more"*



DAVINCI  
VALVES™