

**GROUP 300  
COMPLEMENTS  
MOD. 320A/61**



**DAVINCI  
VALVES™**

**TECHNICAL  
DATA SHEET  
WATER Series**

**Y STRAINERS  
FLANGED ENDS**

**DAVINCI  
VALVES™**



**QUALITY  
ASSUREMENT**

**DAVINCI  
VALVES™**



**PRODUCT QT  
ASSUREMENT**

**DAVINCI  
VALVES™**



**COMPANY QT  
ASSUREMENT**

[www.davincivalves.com](http://www.davincivalves.com)

18 Dongyu Street, Square One,  
11th Floor 1101, Jinjiang District,  
Chengdu, Sichuan CHINA

10F/Tower A, Billion Center,  
1 Wang Kwong Road, Kowloon Bay  
Kowloon HONG KONG

## Y STRAINER D.IRON THREAD END

Ref.320A / PN 10-16

### APPLICATIONS:

Water, air conditioning installations, irrigation, industry, others.

### WORK CONDITIONS:

Max work pressure: 16 bar (\*)

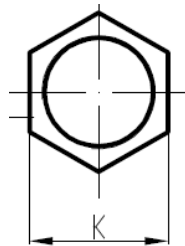
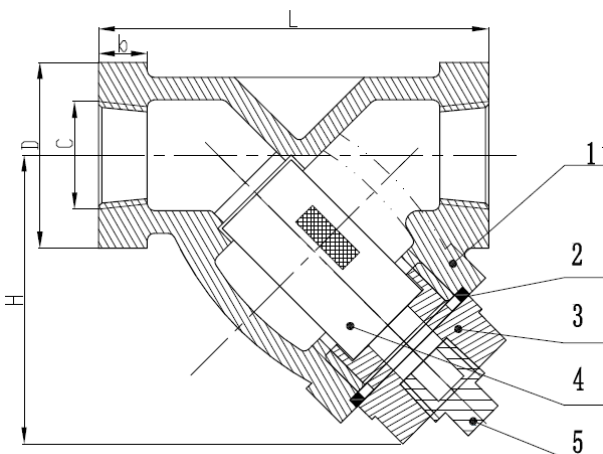
Working temperature: - 10 ° C - + 90 ° C.

### STANDARDS:

Design DIN 3352.

Thread end GAS/NPT

Pressure test: EN 12266-1, DIN 3230 y ISO 5208:



DN	L	C	D	b	H	K
1/2"	76	1/2"	42	10	52	36,20
3/4"	102	3/4"	48	15	65	41,57
1"	124	1"	48	15	81	50,29
1 1/4"	132	1 1/4"	73	16	97	64,40
1 1/2"	146	1 1/2"	82	16	103	71,00
2"	184	2"	100	25	117	86,60
2" 1/2"	222	2" 1/2"	118	28	145	102,00
3"	254	3"	136	30	172	117,00

Nº	ITEM	MATERIAL
1	BODY	GJS400
2	SCREEN	AISI304
3	GASKET	GRAPHITE
4	BONNET	GJS400
5	PLUG	A2

All the components can be substituted with equivalent or higher-class materials.

*"For professionals who wants more"*



DAVINCI  
VALVES™