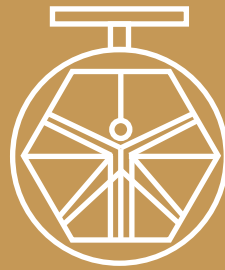


**GROUP 300
COMPLEMENTS
MOD. 300A/63**



**DAVINCI
VALVES™**

TECHNICAL DATA SHEET

WATER Series

**RUBBER EXPANSION JOINTS
SINGLE SPHERE FLANGED ENDS**

**DAVINCI
VALVES™**



**QUALITY
ASSUREMENT**

**DAVINCI
VALVES™**



**PRODUCT QT
ASSUREMENT**

**DAVINCI
VALVES™**



**COMPANY QT
ASSUREMENT**

www.davincivalves.com

18 Dongyu Street, Square One,
11th Floor 1101, Jinjiang District,
Chengdu, Sichuan CHINA

10F/Tower A, Billion Center,
1 Wang Kwong Road, Kowloon Bay
Kowloon HONG KONG

RUBBER EXPANSION JOINTS SINGLE SPHERE FLANGED END Ref.300A / PN 10-16

STANDARDS:

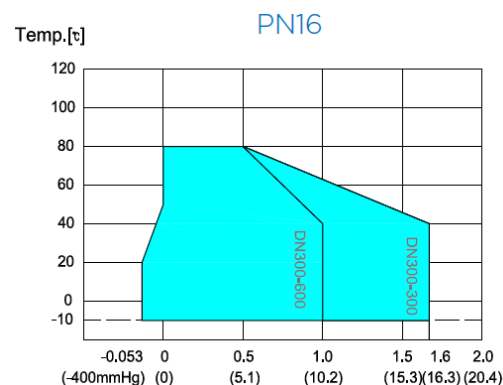
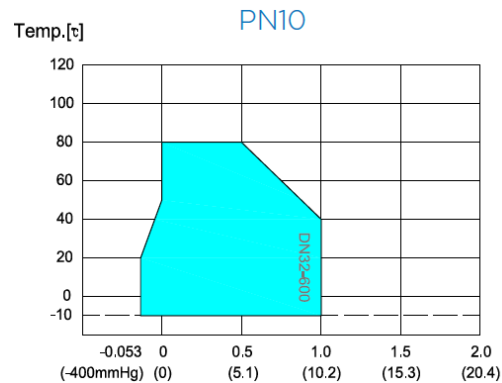
Mounting with flanges: EN 1092-1 PN10 / PN16/ANSI150#
Side flanges according to: ISO 7005-1.
Pressure Test: EN 12266-1, class A.
Body: 24 bars.

*Products excluded from directive 2014/68/EU
Equipment under pressure (Article 4 & 3).*

WORKING CONDITIONS:

Maximum Working Pressure: 16 bar (*)
Explosion Pressure: 50 bar.
Working Temperature: - 10 °C - + 100 °C.
See correction chart according to temperature.
Vacuum KPa(mmHg) 65(490) .

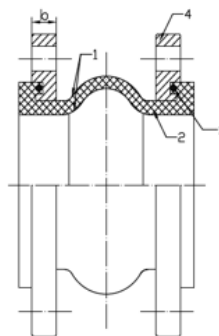
WORKING PRESSURE/ TEMPERATURE TABLE



NO.	PART	MATERIAL
1	BODY	EPDM/NBR
2	KEY FRAME	CORD FABRIC
3	PRESSURIZED RING	STEEL WIRE STRAND
4	FLANGED	STEEL Q235

ELASTOMER

MATERIALS CODE	BODY	HIGHEST TEMPERATURE
BB	Butile	90°
EE	E.P.D.M.	105°
NY	Hypalon	100°
NN	Neoprene	90°
NBR	NBR	90°

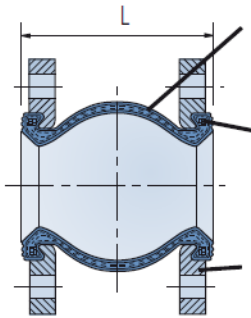


All the components can be substituted with equivalent or higher-class materials.

DAVINCI VALVES LTD, is constantly looking at all ways of improving our products and services related to the water, fire and industry sector and therefore we reserve the right to change, without prior notice, any of the data contained here. Please contact our Technical Sales Department for detailed advice.

© 2018 DAVINCI VALVES LTD.
www.davincivalves.com info@davincivalves.com +34 616553797 / +86 17340168233
18 Dongyu Street, Square One 11th Floor 1101. Jinjiang District, Chengdu, Sichuan Province, China

RUBBER EXPANSION JOINTS SINGLE SPHERE FLANGED END Ref.300A / PN 10-16

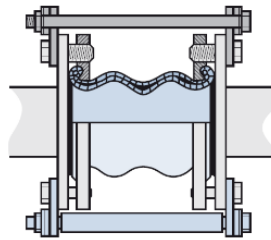


Body of synthetic rubber and reinforcing fiber.

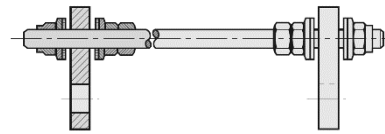
Reinforcing ring make of steel for spring.

Cast C. Steel plated flanges.

ASSEMBLY POSITION

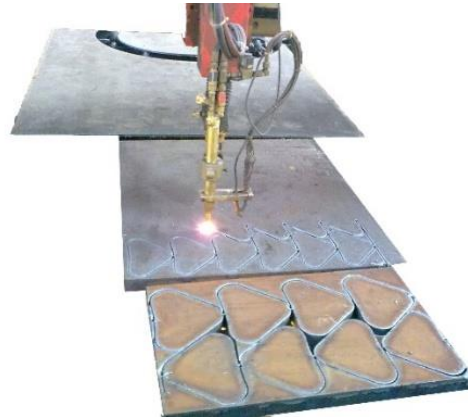


TIE RODS INCLUDE NUTS AND WASHES.



NEED FOR CONTROL TIE RODS BASED ON WORKING PRESSURE

ND	BAR	ND	BAR
40	15	250	7
50	15	300	7
65	15	350	7
80	15	400	5
100	10	450	5
125	10	500	5
150	10	600	5
200	7		



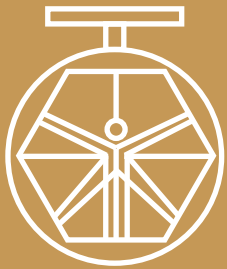
All the components can be substituted with equivalent or higher-class materials.

DAVINCI VALVES LTD, is constantly looking at all ways of improving our products and services related to the water, fire and industry sector and therefore we reserve the right to change, without prior notice, any of the data contained here. Please contact our Technical Sales Department for detailed advice.

© 2018 DAVINCI VALVES LTD.

www.davincivalves.com info@davincivalves.com +34 616553797 / +86 17340168233
18 Dongyu Street, Square One 11th Floor 1101. Jinjiang District, Chengdu, Sichuan Province, China

"For professionals who wants more"



DAVINCI
VALVES™

www.davincivalves.com